



INTRODUCTION

The Lane Elementary School, in general, is a well planned, efficient building. Additions and renovations in 1994 and 2000 to the original 1963 building were executed to create an overall building plan that is simple, direct, and logical.

The current enrollment of 564 will grow to 571 at the peak in 2012/13, an increase of less than ten students. Classroom sizes are adequate. Classrooms are expected to appropriately serve educational needs into the foreseeable future.

Unmet needs are in administration and storage areas, but primarily in special needs program areas.

OPTIONS

The following chart outlines room-by-room space deficiencies, proposed reassignments of selected rooms, notes characterizing the proposed changes, and the timing for the change. Many of the proposed changes are linked to each other, as the creation of the right-sized space to serve an educational program need is often dependent on freeing up space in another area of the building.

The Options first outline proposed solutions for unmet needs for current programs, followed by space needs for proposed programs.

The total additional space required to meet needs in the third phase, within five years, is:

- 5,550 SF net
- 8,325 SF gross, allowing 1.5 mark-up for corridors, wall thickness, and mechanical spaces



**Lane Elementary
School**



SPACE NEEDS								TIMING		
FLR	RM #	CURRENT USE	SIZE in SF	DEFICIENCIES	PROPOSED USE	NOTES	SF UNMET NEEDS	Fall'10	Within 3 Yrs	Within 5 Yrs
CURRENT PROGRAMS								TIMING		
MB	022	SP ED LLAB	853	Too small	Future Classrm	Relocate LLAB to 122; call it Crossroads			X	
	031	CORRIDOR		Underutilized	Level Lib	Install high density rolling files		X		
	038	SPEECH/PT	494	Need updated OT/PT room (2 x size) with updated equipment. Size OK for Speech?	Speech only	Relocate OP/PT to 124		X		
	039A	ALCOVE		Underutilized; not designed for instruction	Support Room; short term Rtl	Separate from Corridor with full wall			X	
	122	COMPUTER ROOM	1196		Crossroads	Phase out Computer Lab with laptop use. In short term use MPR 156 as temp Computer Lab. Rm 122 could support later Foundation Program with add'n of sink.			X	
	123A	HARDWARE STOR	48	Underutilized	Psychologist Testing			X		
	124	PROFESSIONAL LIBRARY	326	Staff Room	Team Leader			X		
	135	MUSIC ROOM	1044	Part time PT	Music	Relocate PT to 230 w/OT		X		
1	136	BAND PRACTICE	480	25% too small; shared w/ OT	Band + ESL + Title	Keep Band Practice as is; Relocate ESL + Title here		X		
	138	ORCHESTRA PRACTICE	478	25% too small	Orch Prac	Leave as is		X		
	148	PSYCH TESTING	95	Too small	Sec	Relocate Psych to 123A. Open 148 and Conf Rm to Main Office; relocate Sec + Spl Ed Sec here. Construct new larger Conf toom at window end of Main Office.			X	
				Spl Ed Sec needs confidential space						
		CONF	85	Too small	Sec					



SPACE NEEDS								TIMING		
FLR	RM #	CURRENT USE	SIZE in SF	DEFICIENCIES	PROPOSED USE	NOTES	SF UNMET NEEDS	Fall'10	Within 3 Yrs	Within 5 Yrs
CURRENT PROGRAMS								TIMING		
MA	156	MULTI-PURPOSE ROOM	1901		MPR	Create Storage Room at far end.			X	
2	203	SP ED (ED/BD)	466	Transitions Class (ED/BD): larger class with "quiet" space and counseling space	Reading	Relocate transitions to 215		X		
	215	READING + LEVEL LIB	803	Space large but shared w/ Level Library	Transitions + temp space for Behavior Splst	Relocate Reading to 203. Relocate Level Library to Library, back of Stage, or entry to 203 (with new partition/door to 203).		X		
	229	CORRIDOR		Underutilized	Level Lib	Install high density rolling files		X		
	230	SPL ED TEAM LDR	344		OT/PT	Relocate Spl Ed Team Leader to 124.		X		
	231	METCO/OT	183	Too small	SPED	Remove wall to create single room.			X	
	232	SPED/SPED SEC	489	Too small						
	233A	ALCOVE	183		Support Room	Separate from Corridor with full wall			X	

3 Lane Elementary School

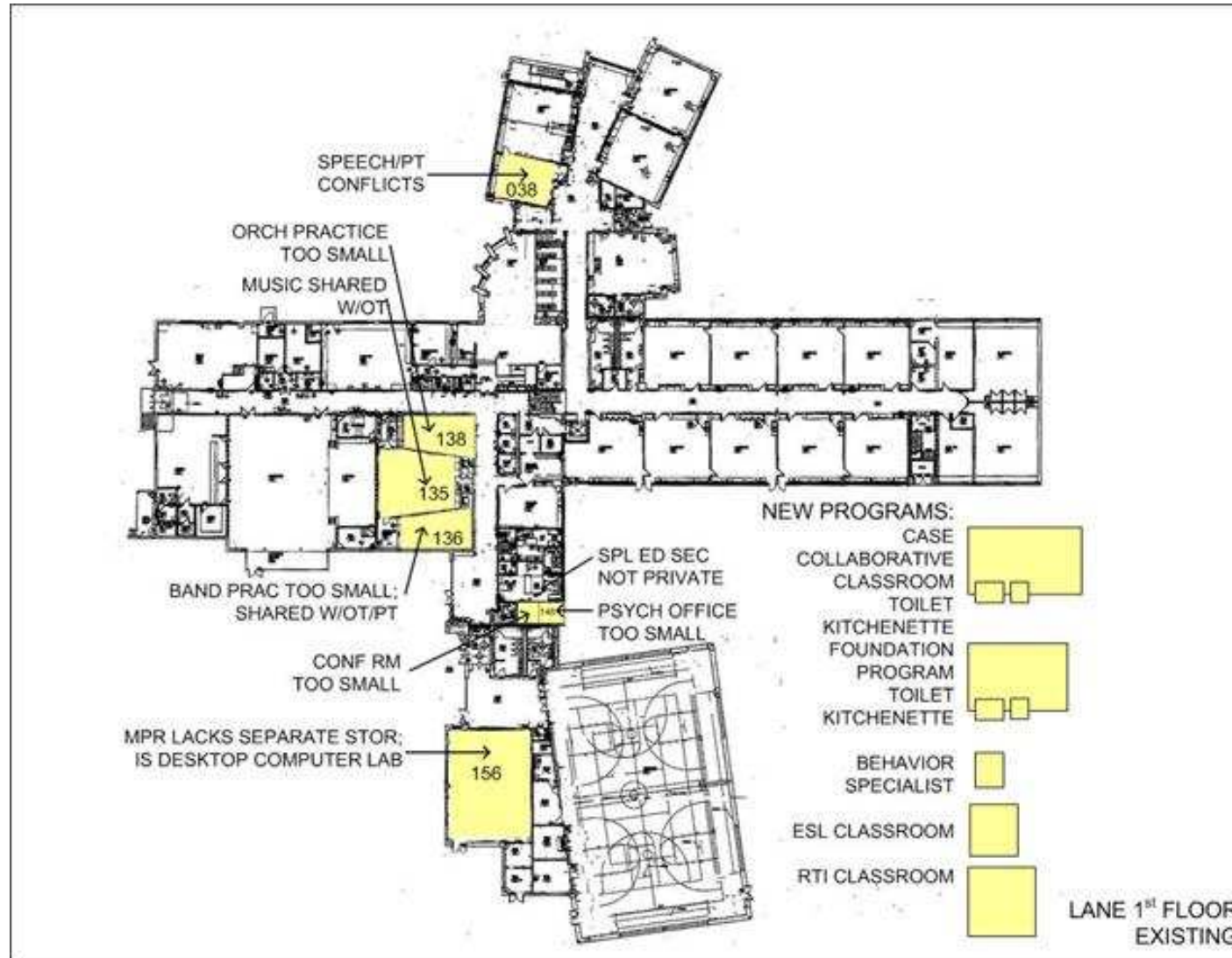


SPACE NEEDS								TIMING		
FLR	RM #	CURRENT USE	SIZE in SF	DEFICIENCIES	PROPOSED USE	NOTES	SF UNMET NEEDS	Fall'10	Within 3 Yrs	Within 5 Yrs
PROPOSED PROGRAMS								TIMING		
				CASE Collaborative Program: Continuation of Davis School program to next level with larger class (2 x size); bathroom, kitchenette; exit door; storage	Need not certain		2000			X
				Toilet	Need not certain		100			X
				Kette	Need not certain		75			X
				Foundation Program classroom (1 ¾ x size) with bathroom and kitchenette	Need not met w/ reno		1750			X
				Toilet	Need not met w/ reno		100			X
				Kette	Need not met w/ reno		75			X
				Office space for behavior specialist	Temp space in Transitions 215		150			X
				Need ESL Classroom; growing population	In Band Practice 136		500			X
				Need Rtl Classrm w/computers + small grp furniture	Need not met.		800		X	
TOTAL NET SF							5550			
TOTAL GROSS SF							8325			



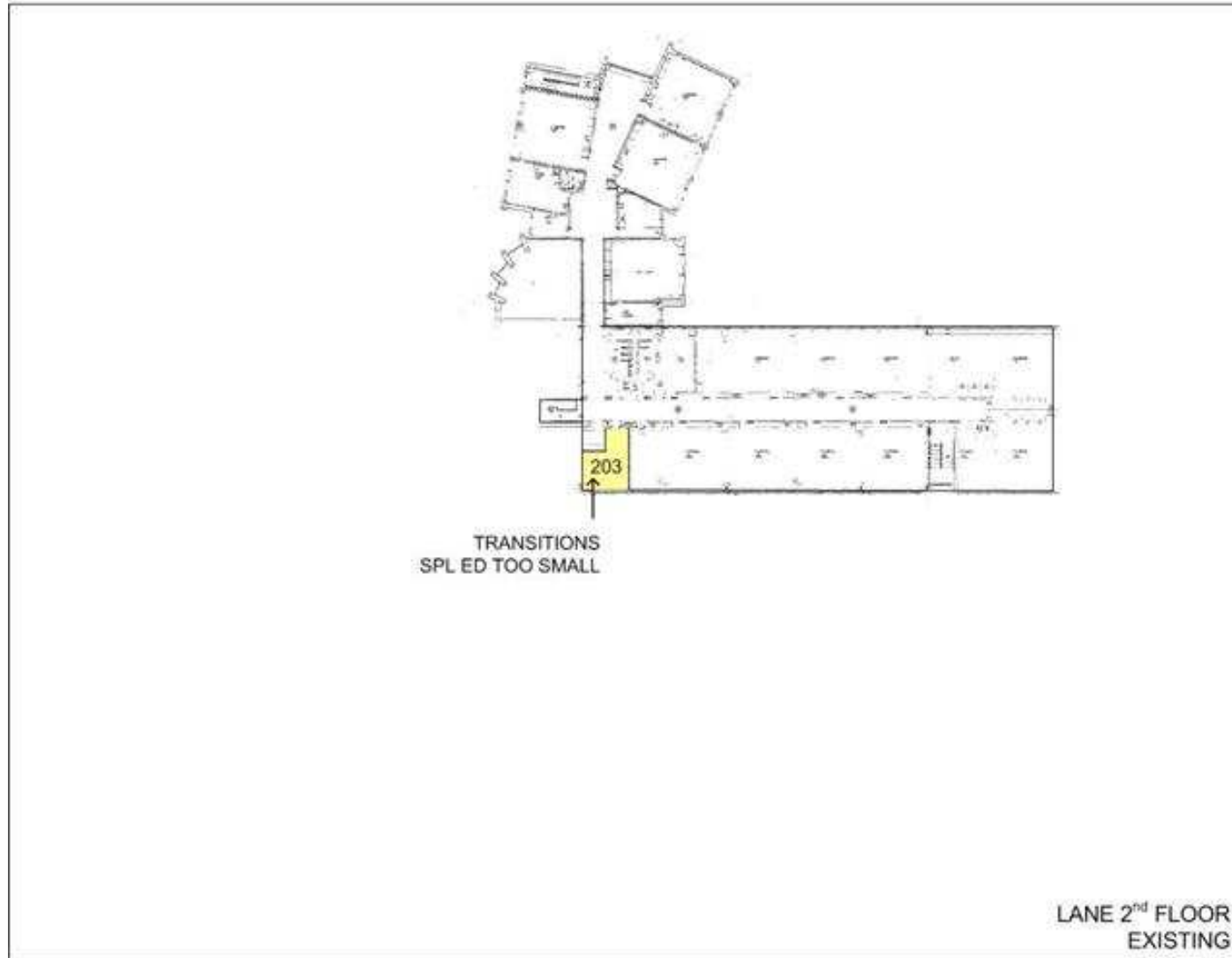
LAYOUT PLANS

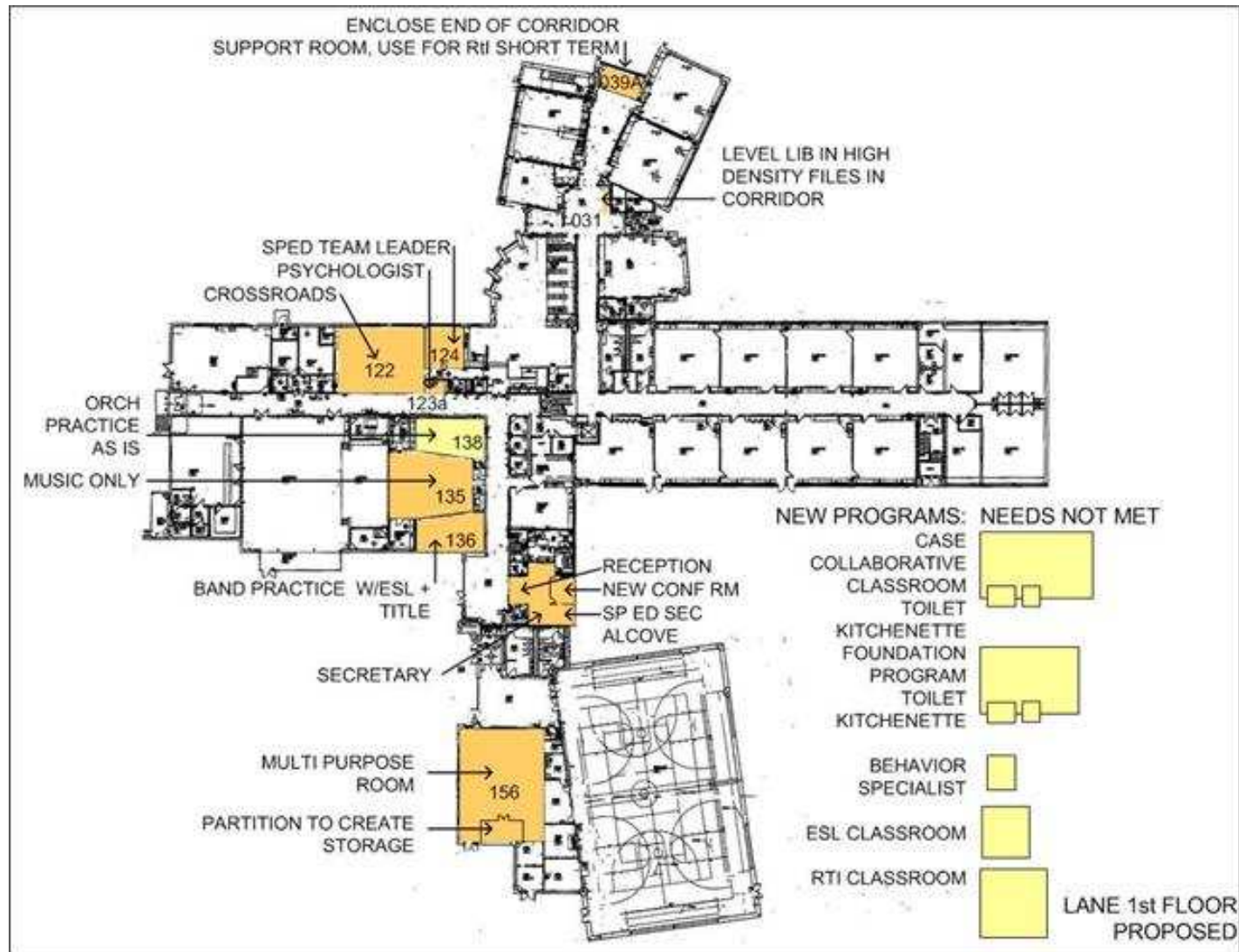
The plans which follow correlate with the Options outlined above. Unmet needs:



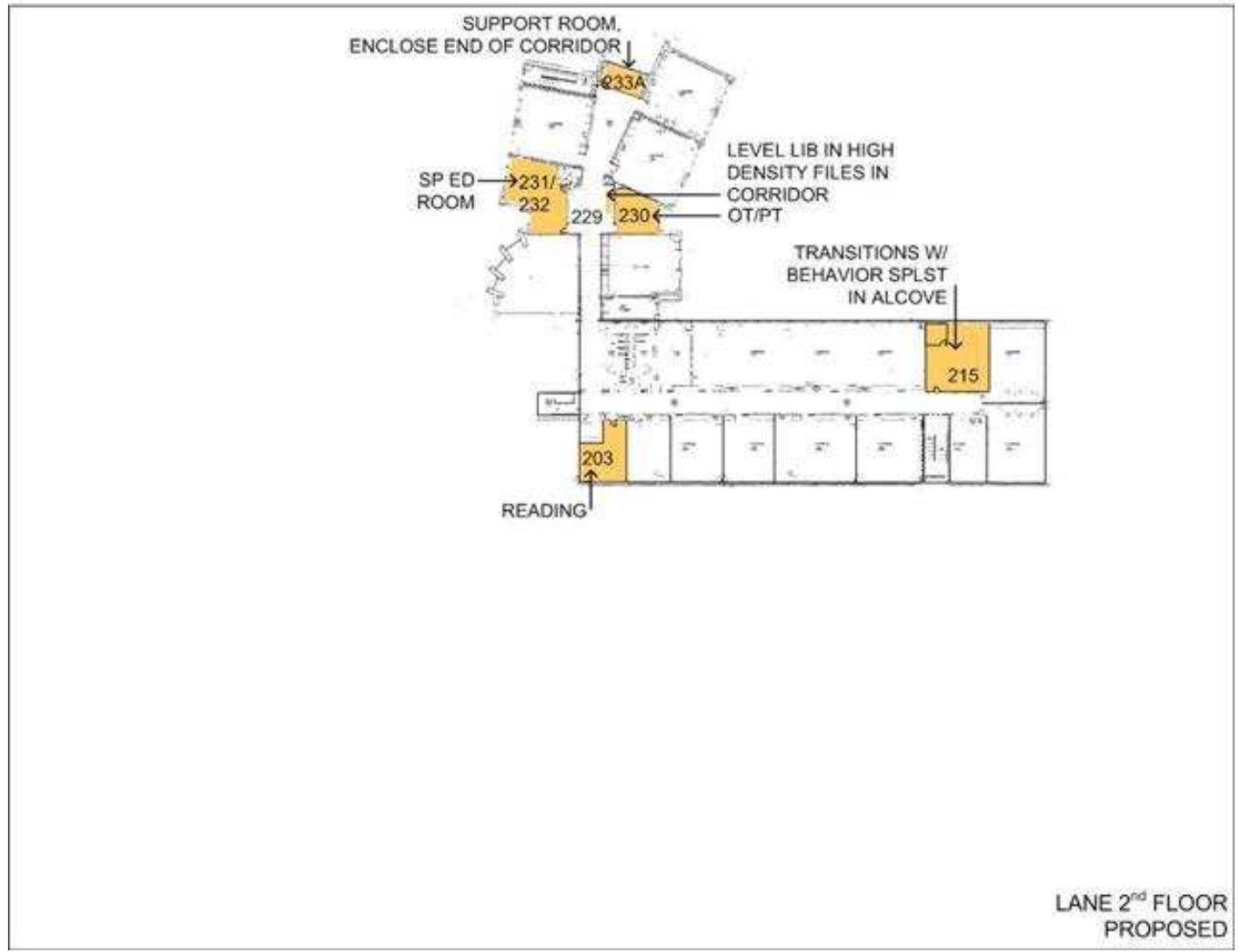


Unmet needs:





Proposed Options to meet needs.
Proposed Options to meet needs:



3 Lane Elementary School



Proposed Options to meet needs, third phase, within five years:

