

Space Needs FY2014

Bedford Public Schools

Locker Report

- Commissioned in 2009
- Analyzed space needs relative to population projections and program needs
- Key Drivers:
 - Existing Kindergarten population increase in 2009
 - Projected Kindergarten population increase for 2012
 - Growing ELL population
 - Increased need for academic intervention space
 - Cost saving creation of in-house special education programs
- Recommended existing space modifications and additional space construction at Davis, Lane, JGMS

Since 2009

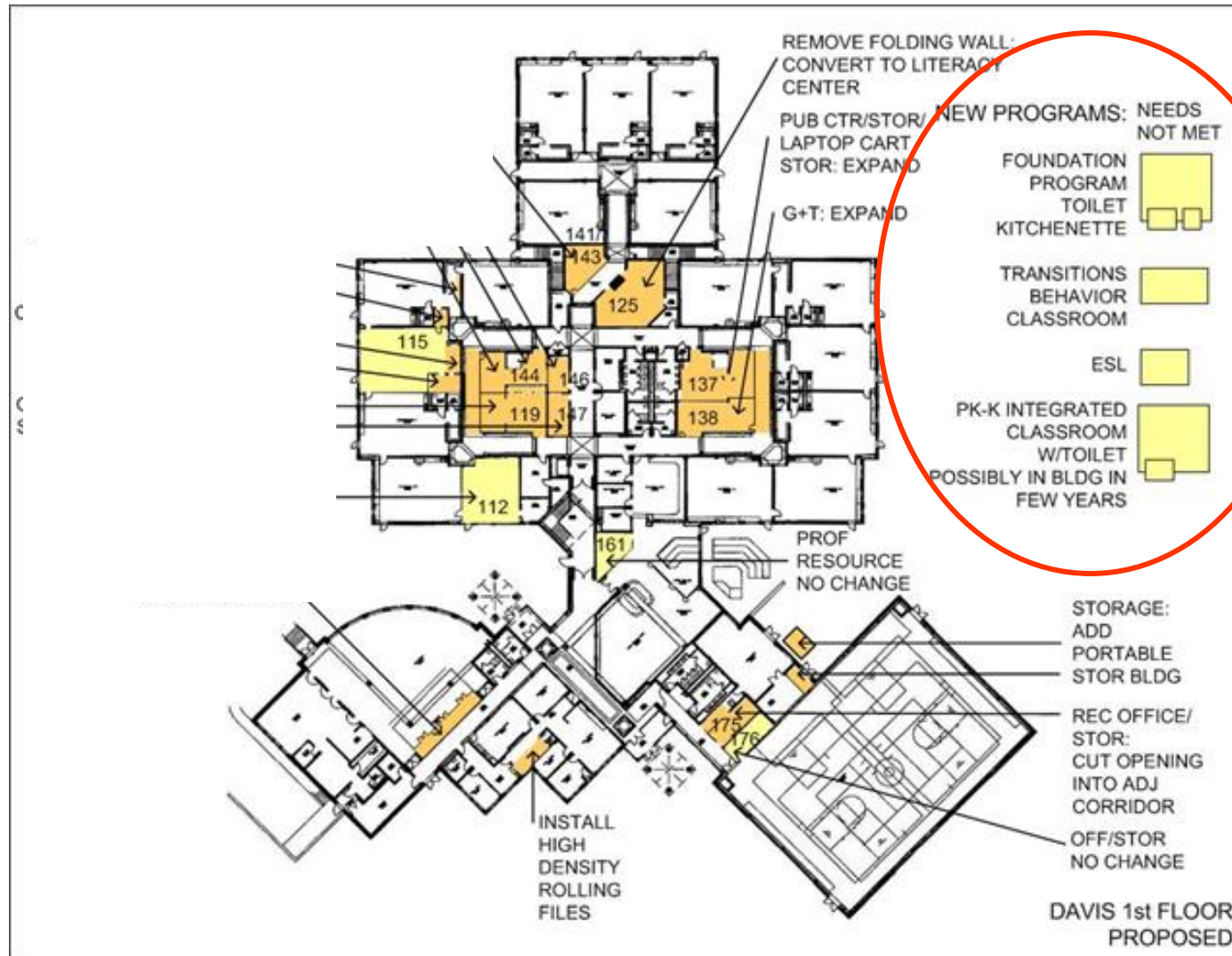
- The schools have implemented a number of the Locker recommendations
 - E.g., the multipurpose room divider and tech ed lab reconfiguration at JGMS
 - The level library at Lane
 - Expanding the CASE toilet, moving music room at Davis
- The convergence of population growth at Lane and JGMS and the actual need for projected ESL, special education and academic intervention spaces have been born out

- However, the following changes have occurred:
 - projected 2012 kindergarten population increase did not materialize
 - projected need for one SPED program was not born out
 - we have identified additional space efficiencies at Davis and a cost-saving space reconfiguration at Lane
 - While the NESDEC Enrollment Study's district totals have been accurate within one or two percentage points, the high school population has peaked much earlier than expected

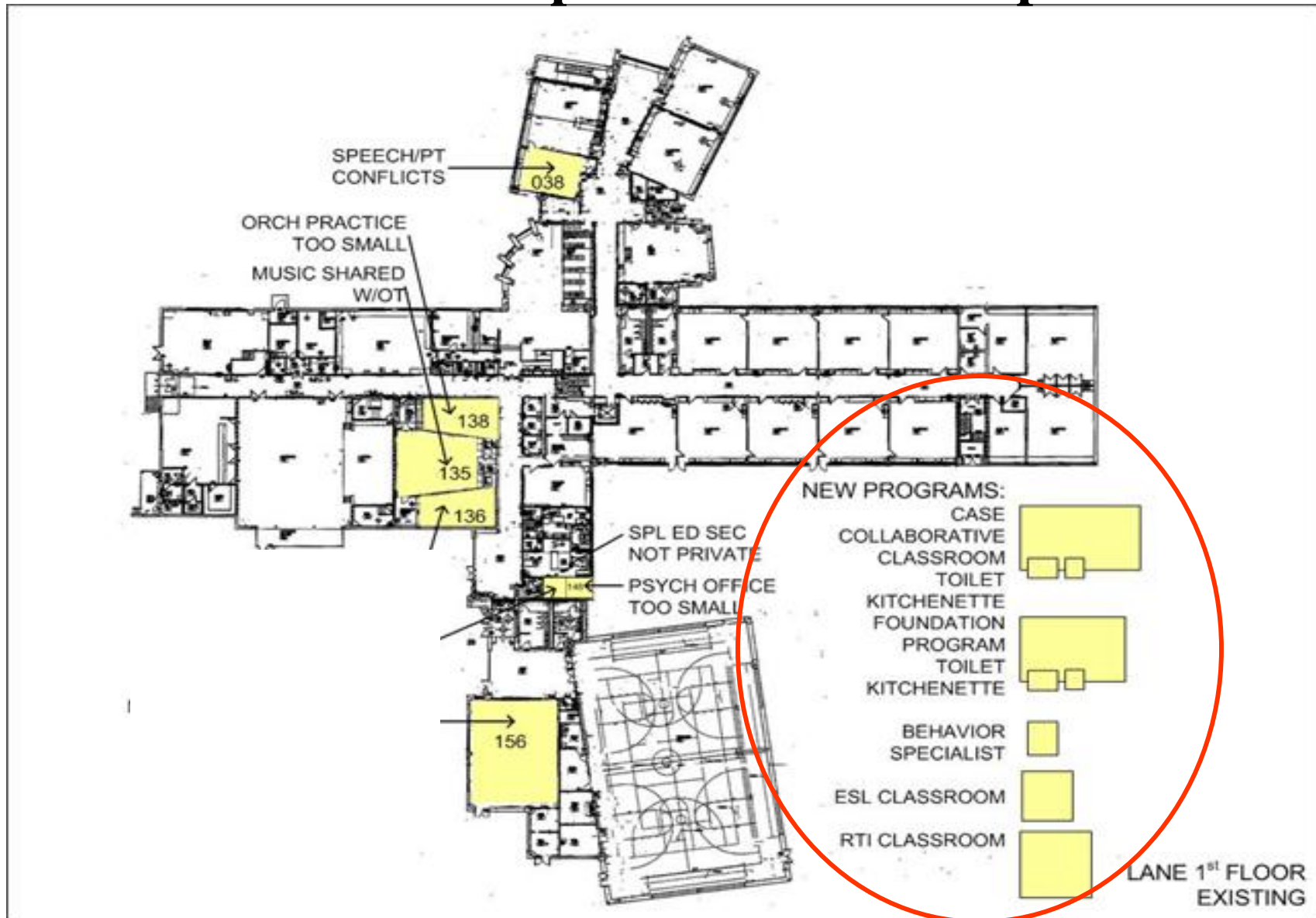
Significant Space Needs Shift

- Therefore, we do not need to construct additional space at Davis or Lane, at a cost avoidance of \$2,100,000 (Davis) and \$2,530,000 (Lane).

Davis Proposed Additional Space



Lane Main Proposed Additional Space



- However, the convergence of population increases at Lane with the projected emergence of critical program needs (Special Education, ESL, Academic Intervention) require several critical FY2014 space reconfigurations:
 - JGMS and Lane will need intervention and ESL space in 2014
 - Lane will need additional regular ed classroom in 2015
- Additionally,
 - Lane will need to have a larger conference room for IEP meetings
 - Davis will need ESL teaching and additional storage space
 - JGMS will need expanded expand special education rooms

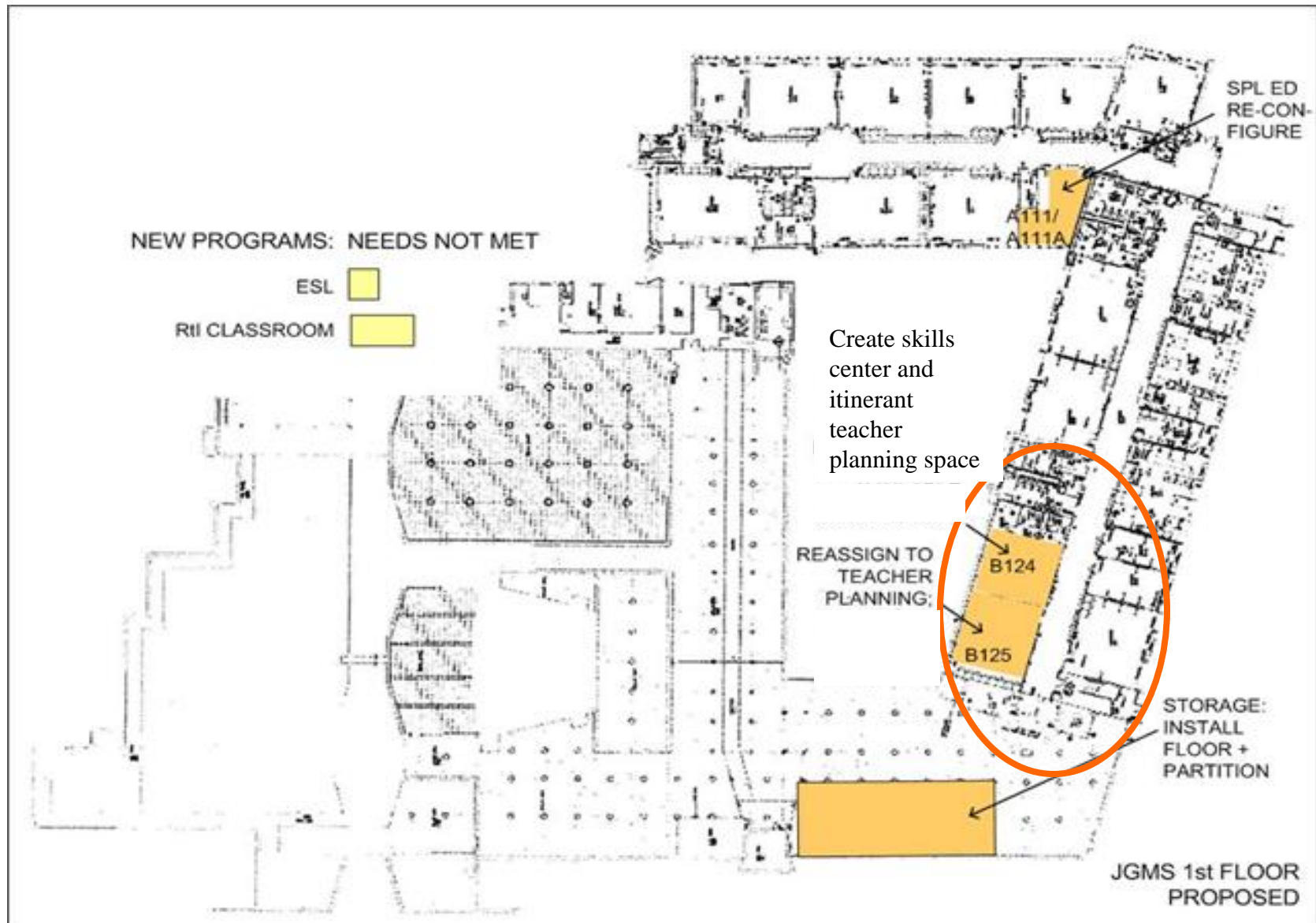
- As well, the high school, which was built for 850 students (MEC Study) is already at 881 and will need space re-reconfiguring and/or re-purposing
- Class size issues have become critical
- In lieu of adding space outside the present footprint, a cost-saving conversion of computer lab space into regular classroom space will be made possible when all students have moved to a one to one environment

FY14 – FY19 Capital Budget Request

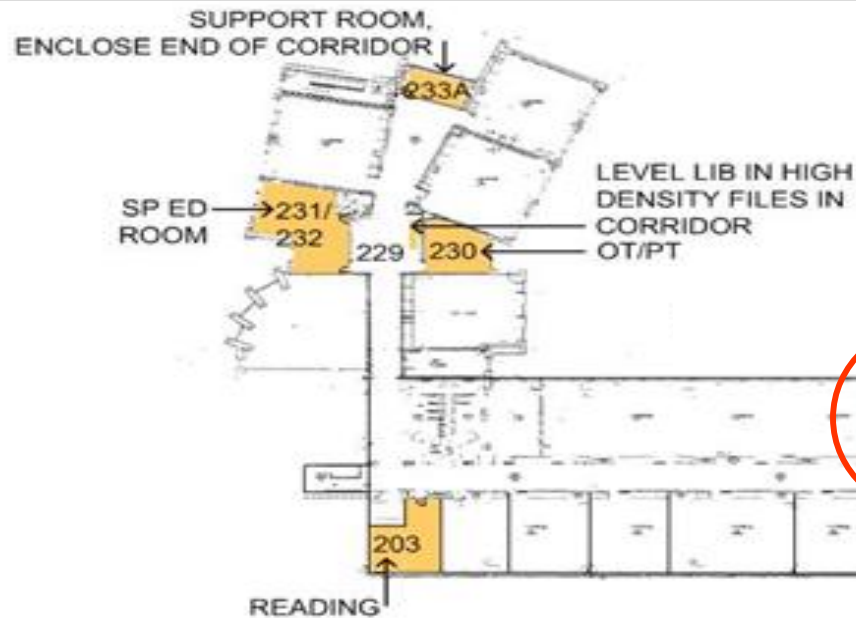
School Space Modifications

•FY14-03 Renovate JGMS Itinerant Teachers Room B124 & B125	\$ 18,600
•FY14-04 Lane Partition Rm 215	\$ 27,500
•FY14-05 Reconfigure JGMS Computer Lab B224	\$ 23,200
•FY14-11 Renovate Davis Green Pod Rm 110	\$ 56,650
FY14 Reconfigure BHS Computer Lab	\$ 20,700
•FY14-12 Renovate Lane Main Office Conference Room	\$ 19,360
•FY14-14 Renovate JGMS Special Ed Rm A211	\$ 6,050
•FY14-15 Renovate JGMS Special Ed Rm A111	<u>\$ 8,000</u>
	\$ 180,060

JGMS Itinerant Teachers room



Lane Rm 213 Partition

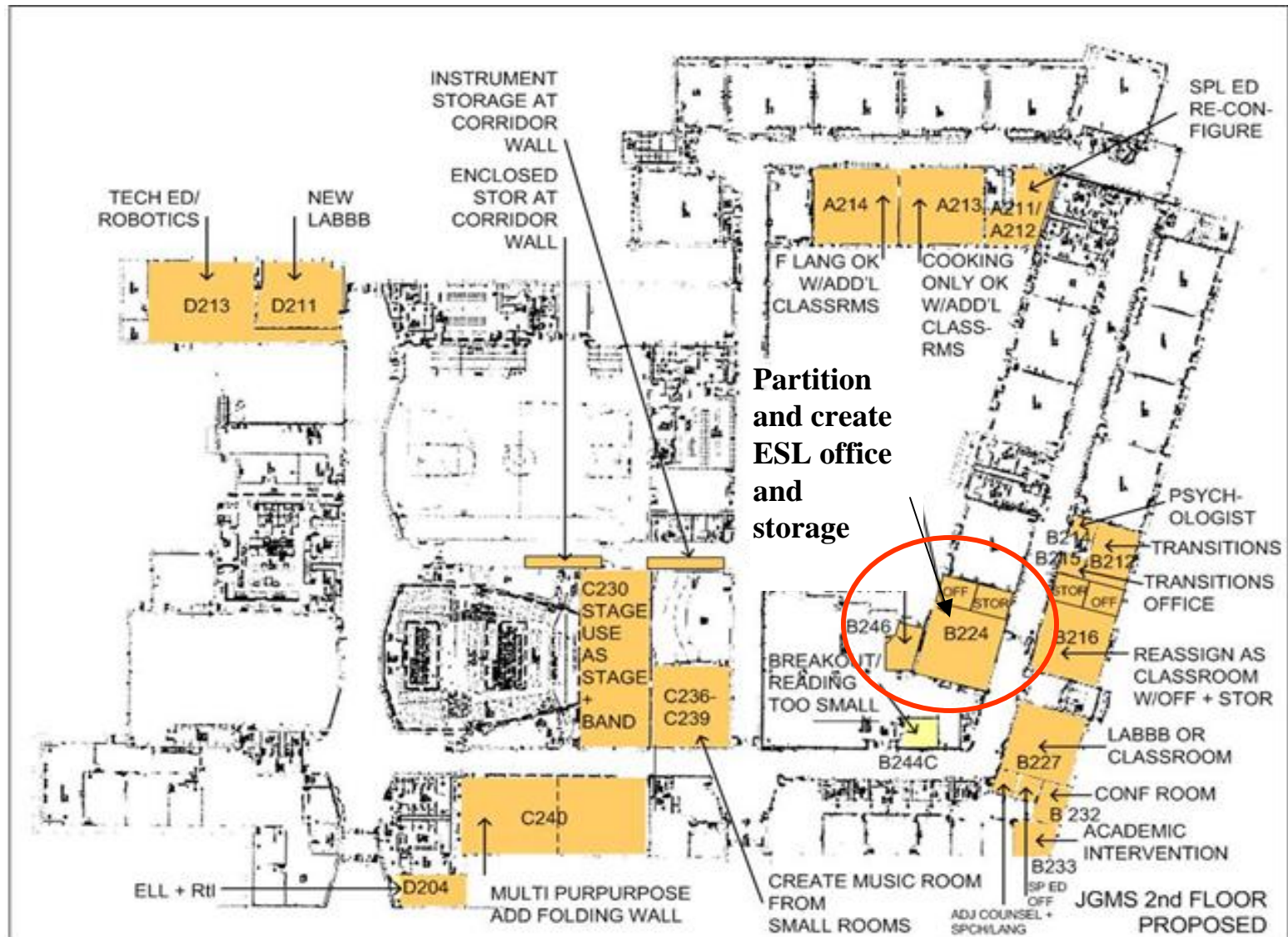


Partition Rm 213 to create two Sp Ed learning centers

Re-purpose Rm 213 first as ESL, then as 5th grade classroom

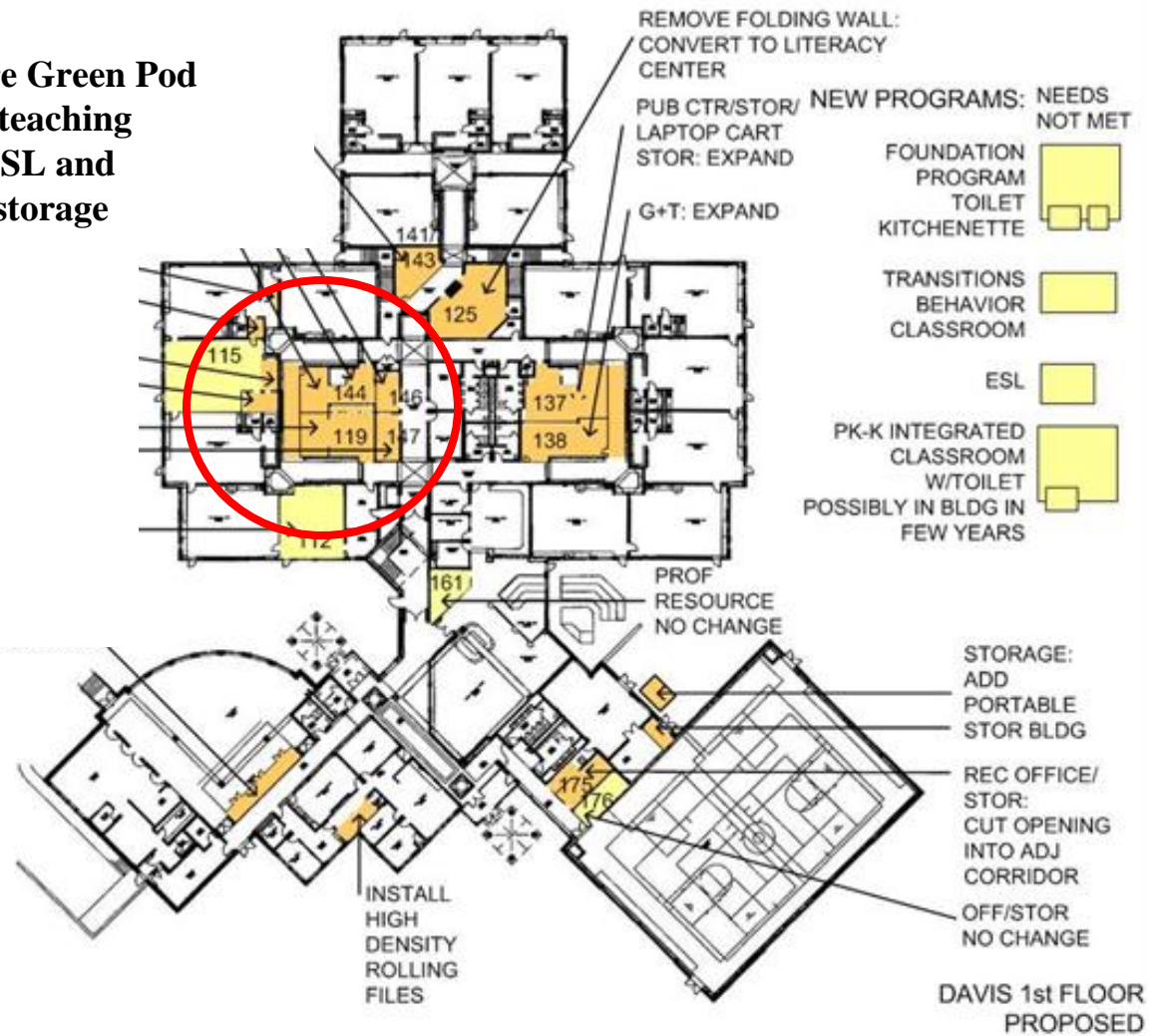
**LANE 2nd FLOOR
PROPOSED**

JGMS Computer Lab

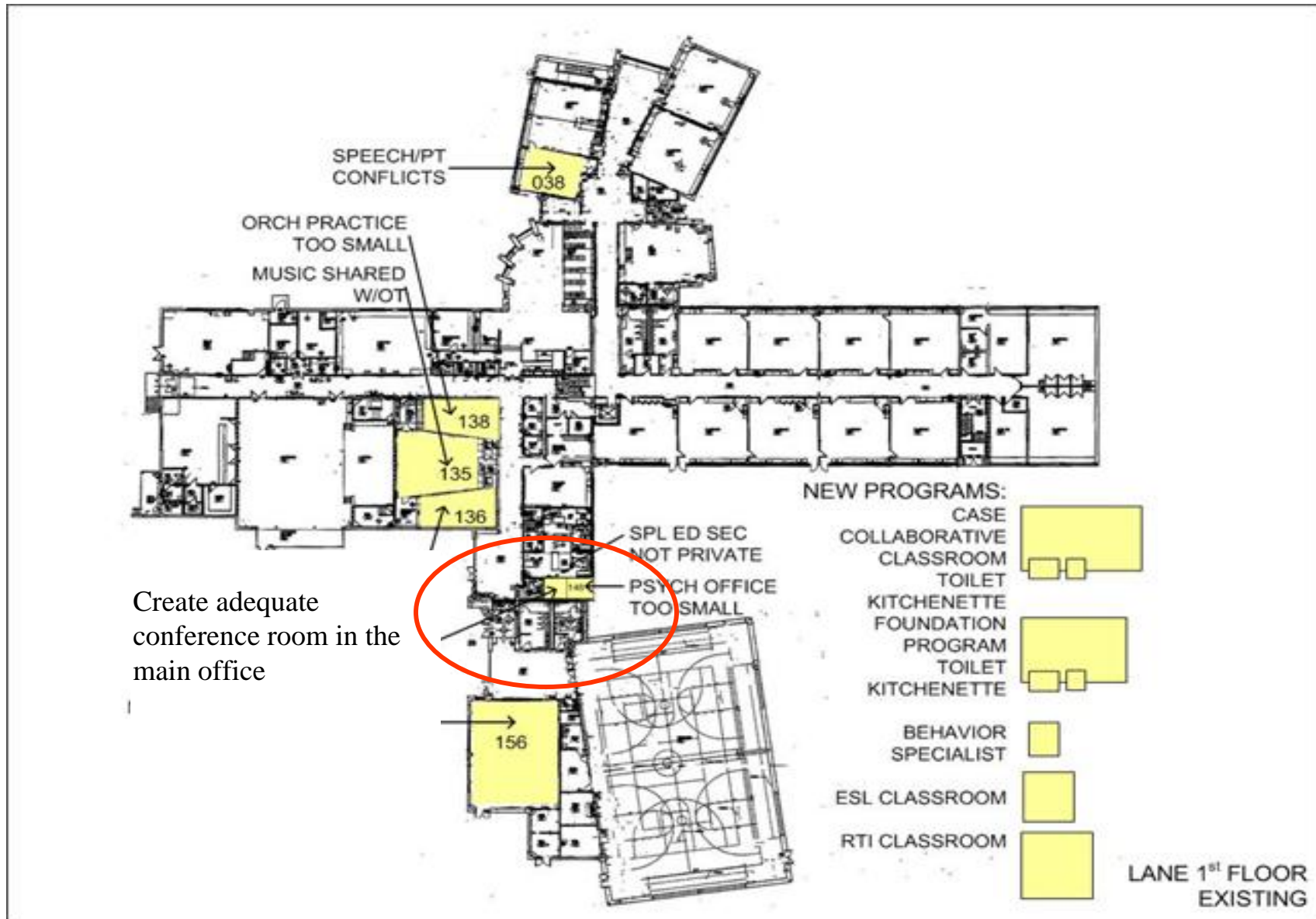


Davis – Green Pod

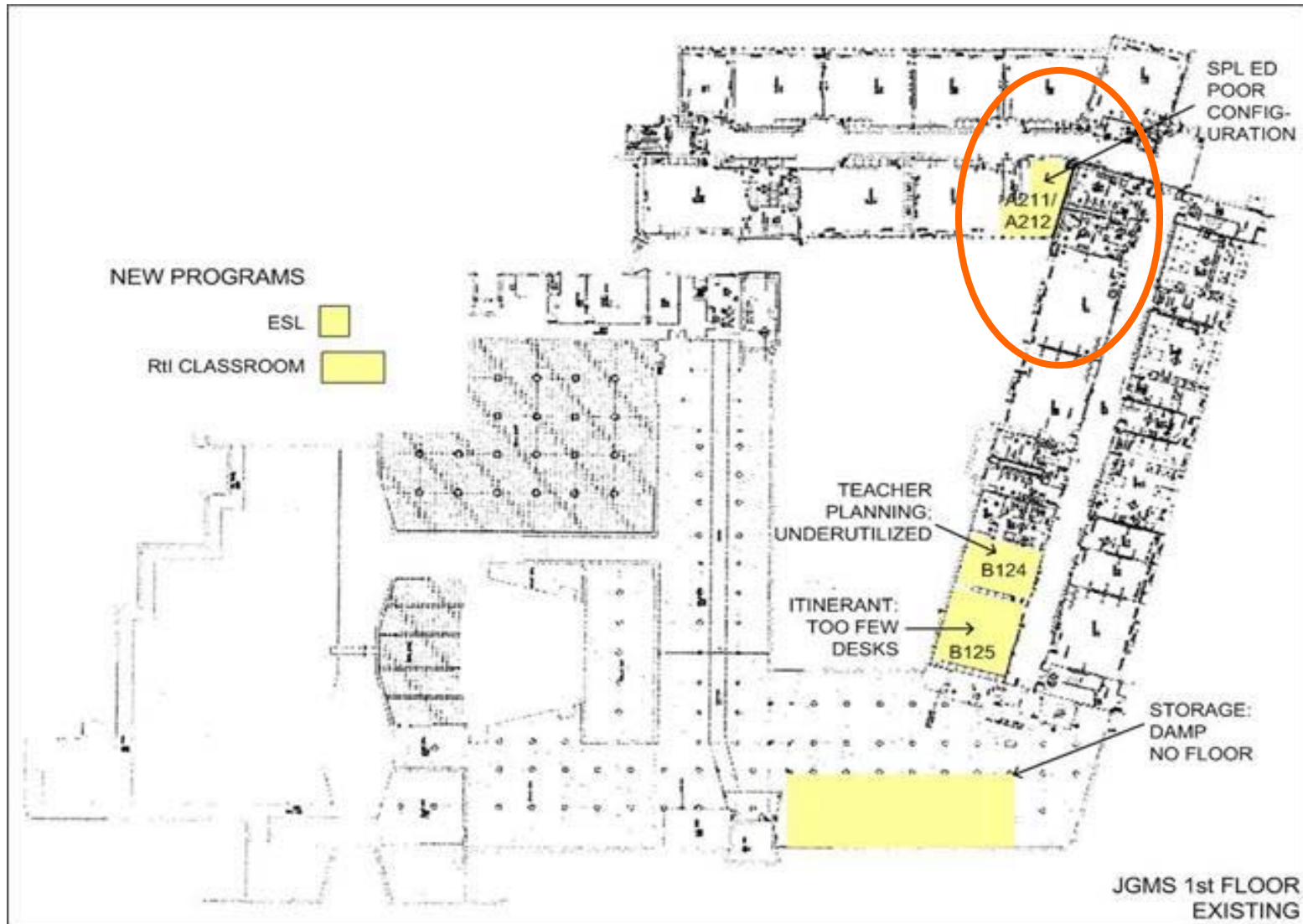
**Reconfigure Green Pod
to create a teaching
space for ESL and
additional storage
space**



Lane Main Office Conference Room



JGMS Special Ed Rm A211



JGMS Special Ed A111

