



# CAPITAL BUDGET OVERVIEW

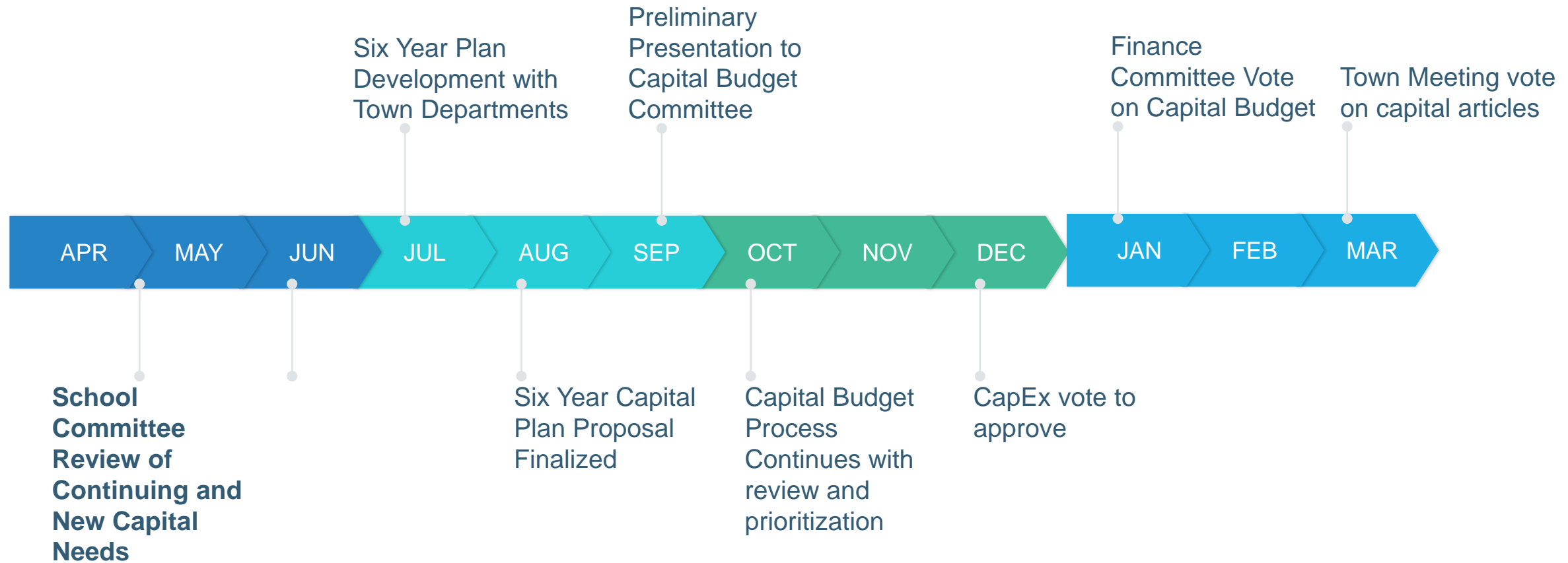
FY24-FY29

BEDFORD PUBLIC SCHOOLS

# ANNUAL CAPITAL PLANNING PROCESS



# TIMELINE



# FY24 CAPITAL BUDGET REQUESTS

4

## **School Capital Maintenance Items:**

- » IT Replacement
- » FFE Replacement

## **School / Facilities Capital Maintenance Items:**

- » Program Space Modification
- » Interior Painting
- » Flooring Replacement

## **School Capital Project:**

- » School Safety and Security
- » Schools & Municipal Buildings – Lightning Protection

# FY2024 SCHOOL PROJECTS

Project Description	Cost	Project Category
Information Technology Plan Replacement	\$ 498,900	Annual
Durable Furniture/Equipment Replacement	\$ 50,088	Capital Maintenance
School Photocopier Replacement	\$ 0	Capital Maintenance
<b>Total Schools FY2023</b>	<b>\$ 567,356</b>	

# SCHOOL ANNUAL CAPITAL REQUEST

- Asset-based replacement model allows the schools to maintain critical equipment in good condition
- A predictable replacement schedule enhances effective and timely implementation
- No new capital projects are proposed currently
- All projects have a single year implementation except for the infrastructure component of the Technology article

# TECHNOLOGY REPLACEMENT

- Replacement budget is based on expected lifecycles
  - ✓ All devices are evaluated prior to replacement
- Inventory Summary provided as back up
- *Incident IQ* inventory management system in use
- BPS Operating budget carries funds for iPad leases

# FY24 TECHNOLOGY REQUEST

## Device Replacement

- 46 PC Desktops (5 year)
- 120 PC Laptops (4 year)
- 230 Chromebooks
- 27 Interactive Boards
- 25 Printers (B&W)

## Infrastructure Replacement

- 25 Wireless Access points
- 15 Network Switches
- 2 Uninterruptible Power Supply devices (UPS)

FY24 Technology Request Detail provided in back-up material



# FY24 FFE REQUEST DETAIL

- Principals and Directors identify the highest priority needs annually
- Detailed FY24 request by school is provided as a handout
- Replacements are condition and lifecycle based
- Capital maintenance funds ensure well-equipped instructional spaces



# FY24 COPIER REQUEST

- Copier purchases have been postponed for two years
- Copier procurement is underway
- Supply chain issues causing lead time of 7-9 months
- No request of additional funds until FY25

# SCHOOL FY24-29 CAPITAL PLAN

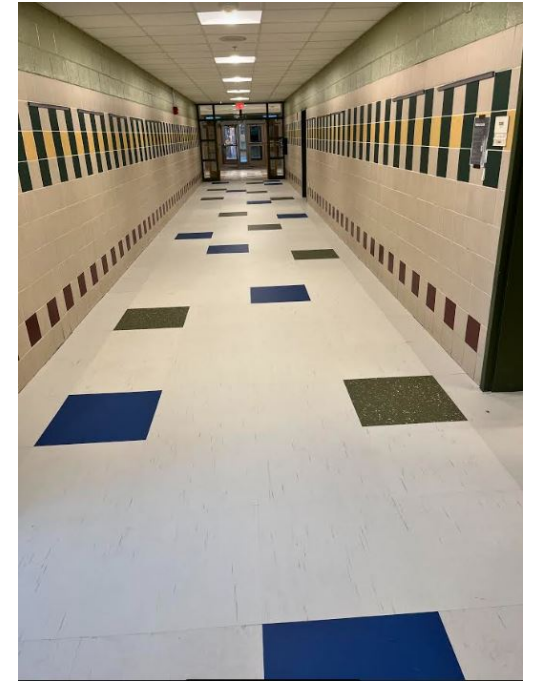
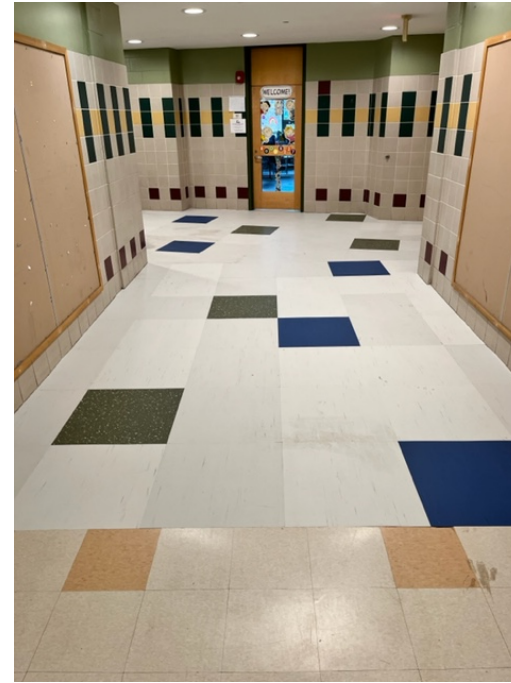
Department	FY2024	FY2025	FY2026	FY2027	FY2028	FY2029
<i>School Department</i>						
All Schools- Info Tech Plan Replacement - Lifecycle replacement of student devices, classroom hardware and technology infrastructure (excludes technology leases which are school operating budget expenses)	498,900	540,700	556,400	555,800	548,800	555,300
All Schools- Photocopier Replacements		41,310	43,376	45,544	47,821	50,213
All Schools- Durable Furniture and Equipment Replacement	50,088	53,093	56,279	59,656	63,235	67,029
<b>Total School Department</b>	<b>548,988</b>	<b>635,103</b>	<b>656,054</b>	<b>661,000</b>	<b>659,856</b>	<b>672,542</b>

# School Facilities Slides

## FY24 FACILITIES PROJECTS (SCHOOLS) - SUMMARY

Project Description	Cost	Project Category
All Schools- Flooring Replacement	\$76,650	Capital Preventive Maintenance - Annual
All Schools- Interior Painting	\$60,109	Capital Preventive Maintenance - Annual
All Schools- Program Space Modifications	\$46,506	Capital Improvement - Annual
All Schools- Security & Safety System	\$350,000	Capital Improvement – Safety
All Town – Lightning Protection	\$68,500	Capital Improvement – Safety

# ALL SCHOOLS- FLOORING REPLACEMENT - \$76,650



JGMS – Classrooms & Hallways

# ALL SCHOOLS - INTERIOR PAINTING - \$60,109



This summer (2022), approx. 35 classrooms and several hallways were painted at Lane



# ALL SCHOOLS- PROGRAM SPACE MODIFICATIONS - \$46,506

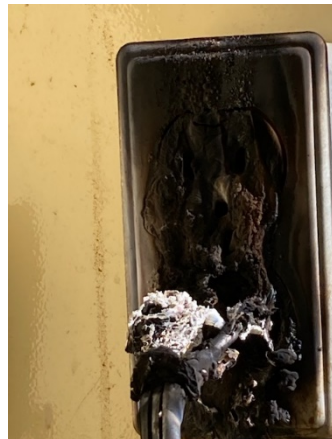


JGMS Space Modifications



# ALL TOWN — LIGHTNING PROTECTION STUDY/DESIGN - \$68,500

This is a new project. Except for Davis school, none of our buildings have lightning protection. Over the last few years, we have experience an increase level of lightning which causes damage to the property and equipment. Many MIIA insurance claims.



# ALL SCHOOLS- SECURITY & SAFETY SYSTEMS - \$350,000

- This is a 2-yr phased in project estimated at \$350,000/yr.
- It will include the recommendations of the comprehensive safety and security site assessment and feasibility study which will be conducted this Fall ( 2022).
- It will cover security cameras, doors hardware & locks, door access control and card readers, and an integrated one-platform for software, among other security measures.

# FY 20 – FY 35 CAPITAL PLAN – EXAMPLE

Project	Dept	Total	FY2020	FY2021	FY2022	FY2023	FY2024	FY2025	FY2026	FY2027	FY2028	FY2029	FY2030	FY2031	FY2032	FY2033	FY2034	FY2035
All Schools- Equipment Replacement	Fac - Sch	\$ 262,022	\$ -	\$ -	\$ -	\$ 29,292	\$ -	\$ 18,171	\$ 18,716	\$ 19,278	\$ 19,856	\$ 20,452	\$ 21,065	\$ 21,697	\$ 22,348	\$ 23,018	\$ 23,709	\$ 24,420
All Schools- Flooring	Fac - Sch	\$ 968,081	\$ -	\$ -	\$ 56,658	\$ 58,358	\$ 60,109	\$ 61,912	\$ 63,769	\$ 65,682	\$ 67,653	\$ 69,683	\$ 71,773	\$ 73,926	\$ 76,144	\$ 78,428	\$ 80,781	\$ 83,205
All Schools- Interior Painting	Fac - Sch	\$ 968,081	\$ -	\$ -	\$ 56,658	\$ 58,358	\$ 60,109	\$ 61,912	\$ 63,769	\$ 65,682	\$ 67,653	\$ 69,683	\$ 71,773	\$ 73,926	\$ 76,144	\$ 78,428	\$ 80,781	\$ 83,205
All Schools- Program Space Modifications	Fac - Sch	\$ 749,007	\$ -	\$ -	\$ 43,837	\$ 45,152	\$ 46,506	\$ 47,902	\$ 49,339	\$ 50,819	\$ 52,343	\$ 53,913	\$ 55,531	\$ 57,197	\$ 58,913	\$ 60,680	\$ 62,500	\$ 64,375
All Schools- Security System (pending SC approval)/Intrusion Detection System	Fac - Sch	\$ 775,000	\$ -	\$ -	\$ -	\$ 75,000	\$ 700,000	\$ -	\$ -	\$ -	\$ -	\$ -	\$ -	\$ -	\$ -	\$ -	\$ -	\$ -
Bedford High School- Building Systems Recommissioning- (Energy Efficiency)	Fac - Sch	\$ 205,388	\$ -	\$ -	\$ -	\$ -	\$ -	\$ -	\$ -	\$ 205,388	\$ -	\$ -	\$ -	\$ -	\$ -	\$ -	\$ -	\$ -
Bedford High School- Boiler #1, #2, #3 Replacement (FY24 Design/FY25 Construction) (Make Ready Net Zero)	Fac - Sch	\$ 4,880,140	\$ -	\$ -	\$ -	\$ -	\$ 318,270	\$ 4,561,870	\$ -	\$ -	\$ -	\$ -	\$ -	\$ -	\$ -	\$ -	\$ -	\$ -
Bedford High School- Roof Replacement (Energy Efficiency) 2027	Fac - Sch	\$ 2,575,000	\$ -	\$ -	\$ -	\$ -	\$ -	\$ -	\$ -	\$ 2,575,000	\$ -	\$ -	\$ -	\$ -	\$ -	\$ -	\$ -	\$ -
Bedford High School-ERUs (Energy Recovery Units)	Fac - Sch	\$ 2,533,540	\$ -	\$ -	\$ -	\$ -	\$ -	\$ -	\$ -	\$ -	\$ -	\$ -	\$ -	\$ 2,533,540	\$ -	\$ -	\$ -	\$ -
Bedford High School-AC units	Fac - Sch	\$ 140,131	\$ -	\$ -	\$ -	\$ -	\$ -	\$ -	\$ -	\$ -	\$ -	\$ -	\$ -	\$ 140,131	\$ -	\$ -	\$ -	\$ -
Bedford High School-Hot Water Heaters (8 Electric Units @ 75K ea.)	Fac - Sch	\$ 337,653	\$ -	\$ -	\$ -	\$ -	\$ -	\$ -	\$ -	\$ -	\$ 337,653	\$ -	\$ -	\$ -	\$ -	\$ -	\$ -	\$ -
Bedford High School- Univent Replacements (Energy Efficiency)	Fac - Sch	\$ 1,648,000	\$ -	\$ -	\$ -	\$ -	\$ -	\$ -	\$ -	\$ 1,648,000	\$ -	\$ -	\$ -	\$ -	\$ -	\$ -	\$ -	\$ -
Bedford High School/John Glenn Middle School- Exterior Painting	Fac - Sch	\$ 143,916	\$ -	\$ -	\$ -	\$ 143,916	\$ -	\$ -	\$ -	\$ -	\$ -	\$ -	\$ -	\$ -	\$ -	\$ -	\$ -	\$ -
Bedford High School/Lane School- Emergency Standby Generator Expansion	Fac - Sch	\$ 31,016	\$ -	\$ -	\$ -	\$ -	\$ -	\$ -	\$ 31,016	\$ -	\$ -	\$ -	\$ -	\$ -	\$ -	\$ -	\$ -	\$ -
Davis School- Elevator Controls Replacement	Fac - Sch	\$ 72,000	\$ -	\$ -	\$ -	\$ -	\$ -	\$ 72,000	\$ -	\$ -	\$ -	\$ -	\$ -	\$ -	\$ -	\$ -	\$ -	\$ -
Davis School- Roof Replacement (Energy Efficiency) 2026	Fac - Sch	\$ 1,648,000	\$ -	\$ -	\$ -	\$ -	\$ -	\$ -	\$ 1,648,000	\$ -	\$ -	\$ -	\$ -	\$ -	\$ -	\$ -	\$ -	\$ -
Davis School-Energy Eff. Measure Bldg Systems Retrocommissioning	Fac - Sch	\$ 66,948	\$ -	\$ 66,948	\$ -	\$ -	\$ -	\$ -	\$ -	\$ -	\$ -	\$ -	\$ -	\$ -	\$ -	\$ -	\$ -	\$ -
Davis School- Boiler Replacement (FY29 Design/FY30 Construction) (Energy Net Zero)	Fac - Sch	\$ 5,067,500	\$ -	\$ -	\$ -	\$ -	\$ -	\$ -	\$ -	\$ -	\$ 357,700	\$ 4,709,800	\$ -	\$ -	\$ -	\$ -	\$ -	\$ -
Davis School-Univent Replacement (Energy Efficiency)	Fac - Sch	\$ 1,648,000	\$ -	\$ -	\$ -	\$ -	\$ -	\$ -	\$ -	\$ -	\$ -	\$ 1,648,000	\$ -	\$ -	\$ -	\$ -	\$ -	\$ -
Davis School-Rooftop Units	Fac - Sch	\$ 200,301	\$ -	\$ -	\$ -	\$ -	\$ -	\$ -	\$ -	\$ -	\$ 200,301	\$ -	\$ -	\$ -	\$ -	\$ -	\$ -	\$ -
Davis School- Partial ENZ (done with addition, 2017)	Fac - Sch	\$ -	\$ -	\$ -	\$ -	\$ -	\$ -	\$ -	\$ -	\$ -	\$ -	\$ -	\$ -	\$ -	\$ -	\$ -	\$ -	\$ -
Davis School- Air Conditioning Units	Fac - Sch	\$ 70,939	\$ -	\$ -	\$ -	\$ -	\$ -	\$ -	\$ -	\$ -	\$ 70,939	\$ -	\$ -	\$ -	\$ -	\$ -	\$ -	\$ -
Davis School-Hot Water Heater 1	Fac - Sch	\$ 31,159	\$ -	\$ -	\$ -	\$ -	\$ -	\$ -	\$ -	\$ -	\$ -	\$ -	\$ -	\$ 31,159	\$ -	\$ -	\$ -	\$ -
Davis School-Hot Water Heater 2	Fac - Sch	\$ 31,159	\$ -	\$ -	\$ -	\$ -	\$ -	\$ -	\$ -	\$ -	\$ -	\$ -	\$ -	\$ 31,159	\$ -	\$ -	\$ -	\$ -
John Glenn Middle School- Elevator Controls Replacement	Fac - Sch	\$ 72,000	\$ -	\$ -	\$ -	\$ -	\$ -	\$ 72,000	\$ -	\$ -	\$ -	\$ -	\$ -	\$ -	\$ -	\$ -	\$ -	\$ -
John Glenn Middle School/ Lane School- Fire Alarm System Replacement	Fac - Sch	\$ 235,341	\$ -	\$ -	\$ -	\$ -	\$ -	\$ 235,341	\$ -	\$ -	\$ -	\$ -	\$ -	\$ -	\$ -	\$ -	\$ -	\$ -
John Glenn Middle School- Emergency Generator 200 KW - Diesel Replacement	Fac - Sch	\$ 131,509	\$ -	\$ -	\$ -	\$ -	\$ -	\$ -	\$ -	\$ 131,509	\$ -	\$ -	\$ -	\$ -	\$ -	\$ -	\$ -	\$ -
John Glenn Middle School- Building Systems Retrocommissioning (Energy Efficiency)	Fac - Sch	\$ 115,728	\$ -	\$ -	\$ 115,728	\$ -	\$ -	\$ -	\$ -	\$ -	\$ -	\$ -	\$ -	\$ -	\$ -	\$ -	\$ -	\$ -
John Glenn Middle School- Boiler #1, #2, #3 Replacement (FY26 Design/FY27 Construction) (Energy Net Zero)	Fac - Sch	\$ 4,508,825	\$ -	\$ -	\$ -	\$ -	\$ -	\$ -	\$ -	\$ 318,270	\$ 4,190,555	\$ -	\$ -	\$ -	\$ -	\$ -	\$ -	\$ -
John Glenn Middle School- Roof Replacement (Energy Efficiency) 2026	Fac - Sch	\$ 2,678,000	\$ -	\$ -	\$ -	\$ -	\$ -	\$ -	\$ 2,678,000	\$ -	\$ -	\$ -	\$ -	\$ -	\$ -	\$ -	\$ -	\$ -
John Glenn Middle School- Univent Replacements (Energy Efficiency)	Fac - Sch	\$ 1,697,440	\$ -	\$ -	\$ -	\$ -	\$ -	\$ -	\$ -	\$ -	\$ 1,697,440	\$ -	\$ -	\$ -	\$ -	\$ -	\$ -	\$ -
John Glenn Middle School- Partial ENZ (done with addition 2020)	Fac - Sch	\$ -	\$ -	\$ -	\$ -	\$ -	\$ -	\$ -	\$ -	\$ -	\$ -	\$ -	\$ -	\$ -	\$ -	\$ -	\$ -	\$ -
John Glenn Middle School- Air Conditioning Units (est 2043)	Fac - Sch	\$ 71,643	\$ -	\$ -	\$ -	\$ -	\$ -	\$ -	\$ -	\$ -	\$ 71,643	\$ -	\$ -	\$ -	\$ -	\$ -	\$ -	\$ -
John Glenn Middle School-Hot Water Heaters (funded 2020)	Fac - Sch	\$ 100,000	\$ -	\$ -	\$ 100,000	\$ -	\$ -	\$ -	\$ -	\$ -	\$ -	\$ -	\$ -	\$ -	\$ -	\$ -	\$ -	\$ -
Lane School- Elevator Controls Replacement	Fac - Sch	\$ 59,946	\$ -	\$ -	\$ -	\$ 59,946	\$ -	\$ -	\$ -	\$ -	\$ -	\$ -	\$ -	\$ -	\$ -	\$ -	\$ -	\$ -
Lane School- Emergency 200 KW Generator - Diesel Replacement	Fac - Sch	\$ 139,518	\$ -	\$ -	\$ -	\$ -	\$ -	\$ -	\$ -	\$ -	\$ 139,518	\$ -	\$ -	\$ -	\$ -	\$ -	\$ -	\$ -
Lane School - split units	Fac - Sch	\$ 175,000	\$ -	\$ -	\$ -	\$ 175,000	\$ -	\$ -	\$ -	\$ -	\$ -	\$ -	\$ -	\$ -	\$ -	\$ -	\$ -	\$ -
Lane School- AC Equipment	Fac - Sch	\$ 242,073	\$ -	\$ -	\$ -	\$ -	\$ -	\$ -	\$ -	\$ -	\$ -	\$ -	\$ 242,073	\$ -	\$ -	\$ -	\$ -	\$ -
Lane School-Univent Replacement	Fac - Sch	\$ 1,648,000	\$ -	\$ -	\$ -	\$ -	\$ -	\$ -	\$ -	\$ -	\$ -	\$ -	\$ 1,648,000	\$ -	\$ -	\$ -	\$ -	\$ -
Lane School- Boiler Replacement (FY28 Design/FY29 Construction) (Energy Net Zero)	Fac - Sch	\$ 4,826,170	\$ -	\$ -	\$ -	\$ -	\$ -	\$ -	\$ -	\$ -	\$ -	\$ 340,670	\$ 4,485,500	\$ -	\$ -	\$ -	\$ -	\$ -
Lane School-Hot Water Heater 1	Fac - Sch	\$ 20,159	\$ -	\$ -	\$ -	\$ -	\$ -	\$ -	\$ -	\$ -	\$ -	\$ 20,159	\$ -	\$ -	\$ -	\$ -	\$ -	\$ -
Lane School-Hot Water Heater 1	Fac - Sch	\$ 19,571	\$ -	\$ -	\$ -	\$ -	\$ -	\$ -	\$ -	\$ -	\$ -	\$ 19,571	\$ -	\$ -	\$ -	\$ -	\$ -	\$ -
Lane School-Rooftop Units	Fac - Sch	\$ 956,225	\$ -	\$ -	\$ -	\$ -	\$ -	\$ -	\$ -	\$ -	\$ -	\$ 956,225	\$ -	\$ -	\$ -	\$ -	\$ -	\$ -
Lane School- Roof Replacement Lane School (Energy Efficiency) 2026	Fac - Sch	\$ 1,648,000	\$ -	\$ -	\$ -	\$ -	\$ -	\$ -	\$ 1,648,000	\$ -	\$ -	\$ -	\$ -	\$ -	\$ -	\$ -	\$ -	\$ -
Lane School- Paging System	Fac - Sch	\$ 72,100	\$ -	\$ -	\$ -	\$ -	\$ -	\$ 72,100	\$ -	\$ -	\$ -	\$ -	\$ -	\$ -	\$ -	\$ -	\$ -	\$ -
Sabourin Field- Public Bathrooms	Fac - Sch	\$ -	\$ -	\$ -	\$ -	\$ -	\$ -	\$ -	\$ -	\$ -	\$ -	\$ -	\$ -	\$ -	\$ -	\$ -	\$ -	\$ -
Sabourin Field- Public Bathrooms	Fac - Sch	\$ 120,488	\$ -	\$ -	\$ -	\$ 120,488	\$ -	\$ -	\$ -	\$ -	\$ -	\$ -	\$ -	\$ -	\$ -	\$ -	\$ -	\$ -
<b>Total Facilities- Capital Upgrades (Schools Only)</b>		<b>\$ 44,590,718</b>	<b>\$ -</b>	<b>\$ 66,948</b>	<b>\$ 372,881</b>	<b>\$ 765,510</b>	<b>\$ 1,184,994</b>	<b>\$ 5,203,208</b>	<b>\$ 6,200,610</b>	<b>\$ 5,079,628</b>	<b>\$ 6,572,670</b>	<b>\$ 914,313</b>	<b>\$ 8,156,640</b>	<b>\$ 9,033,917</b>	<b>\$ 233,549</b>	<b>\$ 302,873</b>	<b>\$ 247,772</b>	<b>\$ 255,205</b>

# 15-YEAR CAPITAL INVESTMENTS (FY20-FY35)

<b><u>Bedford Public Schools</u></b>	<b>FY20 - FY35 Cumulative Capital Expenditure (Spent and Planned)</b>	<b>Average Capital Expenditure by School per year</b>	<b>% of Overall Capital Expenditure</b>
Davis School	\$ 9,766,554	\$ 651,103.59	26.9%
Lane School	\$ 9,766,554	\$ 651,103.59	26.9%
John Glenn Middle School	\$ 8,353,895	\$ 556,926.32	23.0%
Bedford High School	\$ 8,418,456	\$ 561,230.39	23.2%
Total Capital Expenditure	\$ 36,305,458	\$ 2,420,364	100%

**THANK YOU**